

LogLink connects to ShockLog 298 to give you real time location and condition alerts as your assets travel across the globe.

LogLink Overview

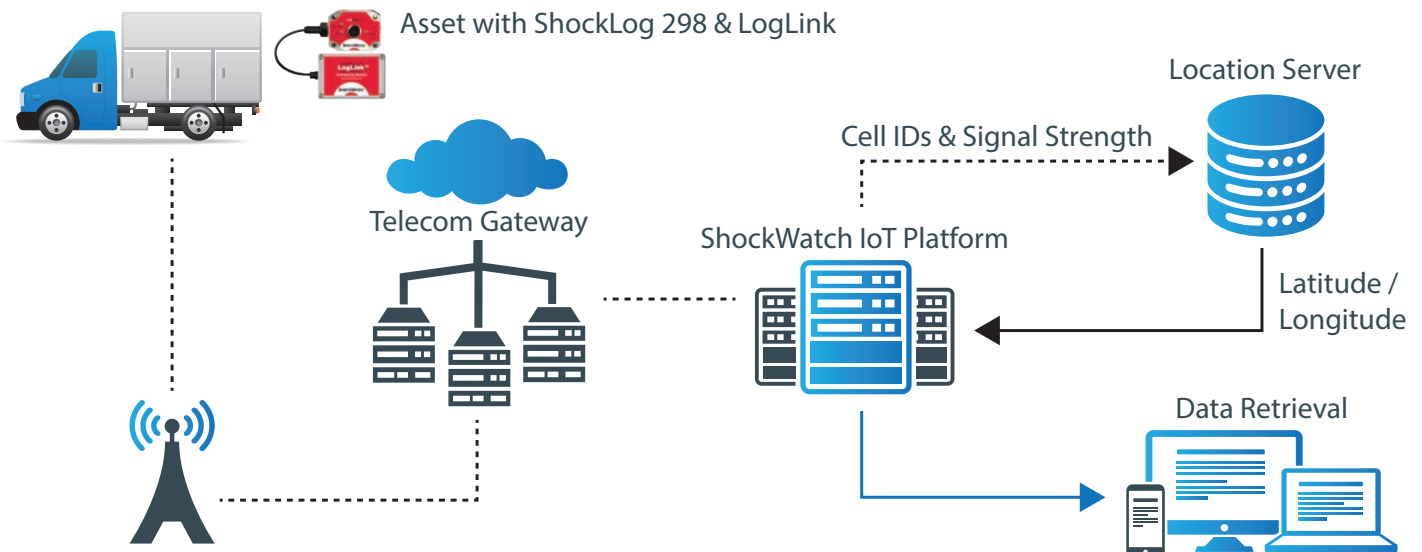
LogLink gives you real-time information about your assets from anywhere in the world. LogLink is an accessory that easily connects to any ShockLog 298 impact recorder, giving you real-time location, time, and shock alerts. In addition to mobile alerts, trip information is accessible via a user-friendly cloud application that can be accessible from anywhere in the world. With the financial impact of cargo loss exceeding \$50 Billion annually, LogLink enables you to know that your assets are travelling safe and sound to their destination.

Features:

- Connects to any new or existing ShockLog 298.
- Real-time alerts, location and impact value information when an event occurs.
- Robust battery life is ideal for long journeys of up to 90 days when reporting at 1 hour intervals.
- Easy-to-use cloud-based interface that is accessible anywhere in the world.
- Low monthly connectivity cost.



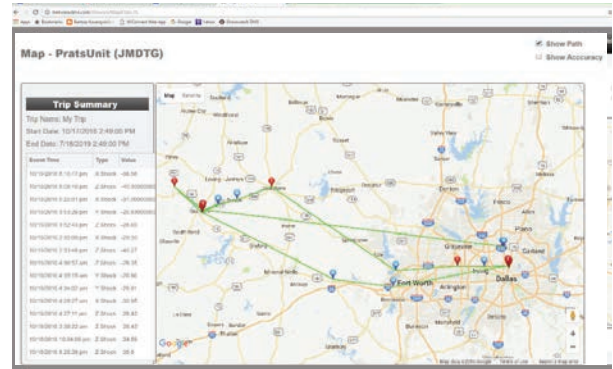
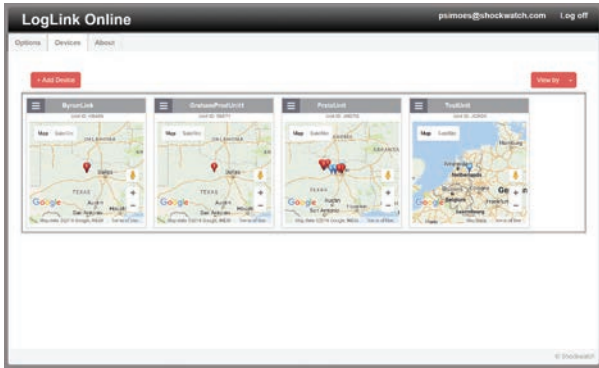
How it Works



LogLink

LogLink Software

During the journey, LogLink will track your asset and alert you of any impact in real time. You can monitor your assets from wherever you are through a user-friendly cloud-based portal.



ShockLog® Analysis Software

When the journey has concluded, the ShockLog 298 allows you to download and analyze the full data set. The ShockLog Report View provides an overview of the entire journey: peak acceleration values for all three axes reported on a time basis as well detailed impact curves. Zoom in for a closer view, or export data into programs such as Excel and Matlab for more detailed analysis.



Key Specifications	
Operating Temperature Range	-86°F to 140°F -30°C to 85°C (due to battery capacity at low temp)
Size	4.72in x 3.15in x 2.18in 120mm x 80mm x 55mm
Weight (with battery)	0.94lb 427g
Battery Type	8 x 1.5V AA Lithium batteries
Communication Technology	Global Cellular 2G



SHOCKWATCH®
SMART SOLUTIONS FOR SAFE TRANSIT