

# g-View Impact Recorder

Low-cost ShockWatch® **g-View impact recorder** identifies mishandling without the cost



Product simplicity means customers can quickly identify potentially damaging events without being overwhelmed with data

## Introducing **g-View**

The ShockWatch g-View is a low-cost impact recorder designed to monitor the handling of fragile goods. Leveraging proven accelerometer technology, the g-View provides a low cost alternative to full featured impact data recorders and was specifically designed to increased visibility during transport and storage. Information enables customers to quickly determine if mishandling has occurred.

Controlled completely through an iButton® interface, customers are able to quickly setup and download the g-View through a single screen software interface. Simply set an impact level threshold, send the setup to the g-View through the iButton interface, and you're ready to record. At the end of a journey, download the collected data with the iButton interface and load the data to a computer for review and analysis.

## Features / Benefits

- Simple programming interface
- Independent x, y, z threshold setting
- LED alerts for quick decision making
- Up to 6-month battery life

## Ideal Applications

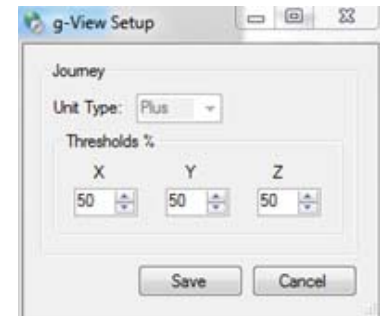
- Medical equipment
- Communications equipment
- Electronics manufacturing equipment
- Aircraft parts
- Alternative energy subassemblies
- Cargo containers
- Crates

ShockWatch is a registered trademark of ShockWatch, Inc. All rights reserved.

# g-View Impact Recorder

## Increased **visibility** at your fingertips

When product leaves your facility, it is impossible to know exactly what conditions it encountered unless you are along for the ride. By using a monitoring program, it's like you are there without ever leaving your facility. The g-View provides you with insight into the handling of your product when it is no longer in your control. LED alerts inform handlers and receivers when the product has experienced unacceptable impacts. Time and date stamping of the impact events allow you to assign accountability to the responsible party and develop corrective action plans to prevent the mishandling in the future.



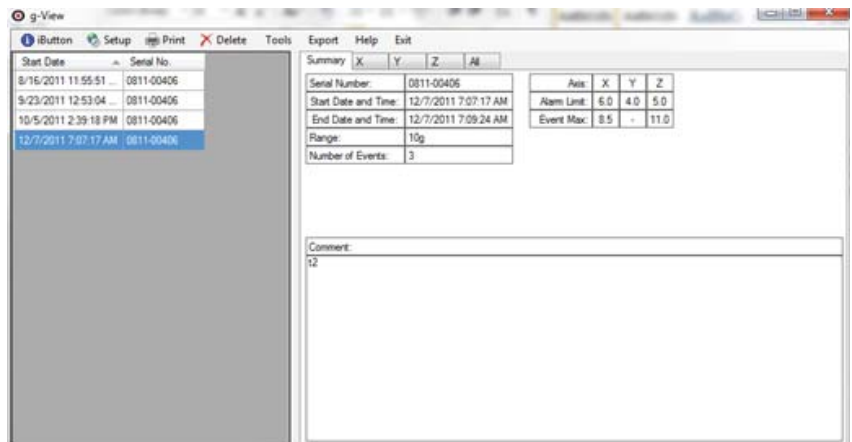
*Easy to use setup screen. Simply set your thresholds and you are ready to go.*

## Easy to **setup** and **interpret**

Sometimes you need complete full-featured recorder and sometimes you just need a simple solution to notify you your product has experienced an event over a threshold. With the g-View, you get impact values for all three axes, temperature as well as the date and time of the events. The g-View is ideal for customers who know what their damage boundary conditions are and they simply need to monitor for excursions.

## A cost effective recorder, making it ideal for **open loop supply chain shipments**

As product values increase, the need to have a more robust monitoring programs increase as well. Some product shipments warrant more than a simple, single use indicator. As supply chain complexity increases, date / time stamped information is increasingly valuable as it is then possible to pinpoint trouble spots in the chain. However, reverse logistics can be extremely complex when shipping product globally. Getting an expensive recorder back to its shipping origin can be a daunting task. With the g-View, customers get an impact-event driven recorder at a price point that often can be written into the overall product packaging specification. Get the information you need at a price that fits your budget.



## Key **Specifications**

Specification	g-View
Impact Range (Factory Set)	10g or 25g
Cutoff Frequency (Factory Set)	25Hz or 40Hz
Operating Temperature Range	-10°C / -14°F to 50°C / 122°F
Accuracy	+ 6% of range
Battery Life	Up to 6 months

# g-View Impact Recorder

## A scalable portfolio of impact monitoring solutions

Labels	DropSpot	MAG 2000	g-View	ShockLog
Near 360° Response	Planar (2D) Response	Planar (2D) Response	Three dimensional response	
Single use	Single use	Resettable with key	Reusable recorder	
	Field armable	Field armable	iButton start	Software or iButton start
	Indicates single impact		Records 100 impact events/axis	Records up to 870 impact events and over 260k time slots
	Indicates impact only		Records impact & internal temperature	Records impact & internal temperature w/ accessories to measure temp, humidity, pressure, tilt, roll, GPS
	No battery required		Up to 6 month battery life	Up to 18 month battery life
	No software		Simple setup & report software	Complete analysis software

Increasing information delivered

## Partner with the experts

ShockWatch, Inc. is a global leader in the innovation and optimization of logistics and cold chain risk mitigation. In addition to providing industry-leading solutions, ShockWatch consultants are subject matter experts that excel in partnership. They are available to support training and execution of your program:

- Ensure proper implementation and effective long-term usage of a g-View monitoring system
- Optimize your hardware investment for in improved bottom line
- Maximize understanding of conditions that affect products during transit and in operation
- Integrate your existing logistics, loss management and quality programs with a variety of tools.

Contact your representative for more details on build a program around your monitoring solution.

## About ShockWatch

As the global leader in the innovation and optimization of logistics and cold-chain risk management systems, ShockWatch provides solutions that currently enable over 3000 customers and some 200 partners in 62 countries to detect mishandling that causes product damage and spoilage during transport and storage. The robust ShockWatch product portfolio includes impact, tilt, temperature, vibration, and humidity detection systems and is widely used in the energy, transportation, aerospace, defense, food, pharmaceutical, medical device, and manufacturing sectors.

Founded in 1976 and based in Dallas, Texas, ShockWatch is a subsidiary of MRI, Inc., which is also the parent of DPC and DataSpan. MRI's international client base includes two-thirds of the Fortune 100 and more than half of the Fortune 1000 companies.

For more information on ShockWatch position on RoHS, EU Directive 2002/95/EC, Amendment Commission Decision 2005/618/EC, and our certificates of compliance, please visit [www.shockwatch.com](http://www.shockwatch.com). DropSpot and g-View are trademarks of ShockWatch, Inc. All rights reserved.